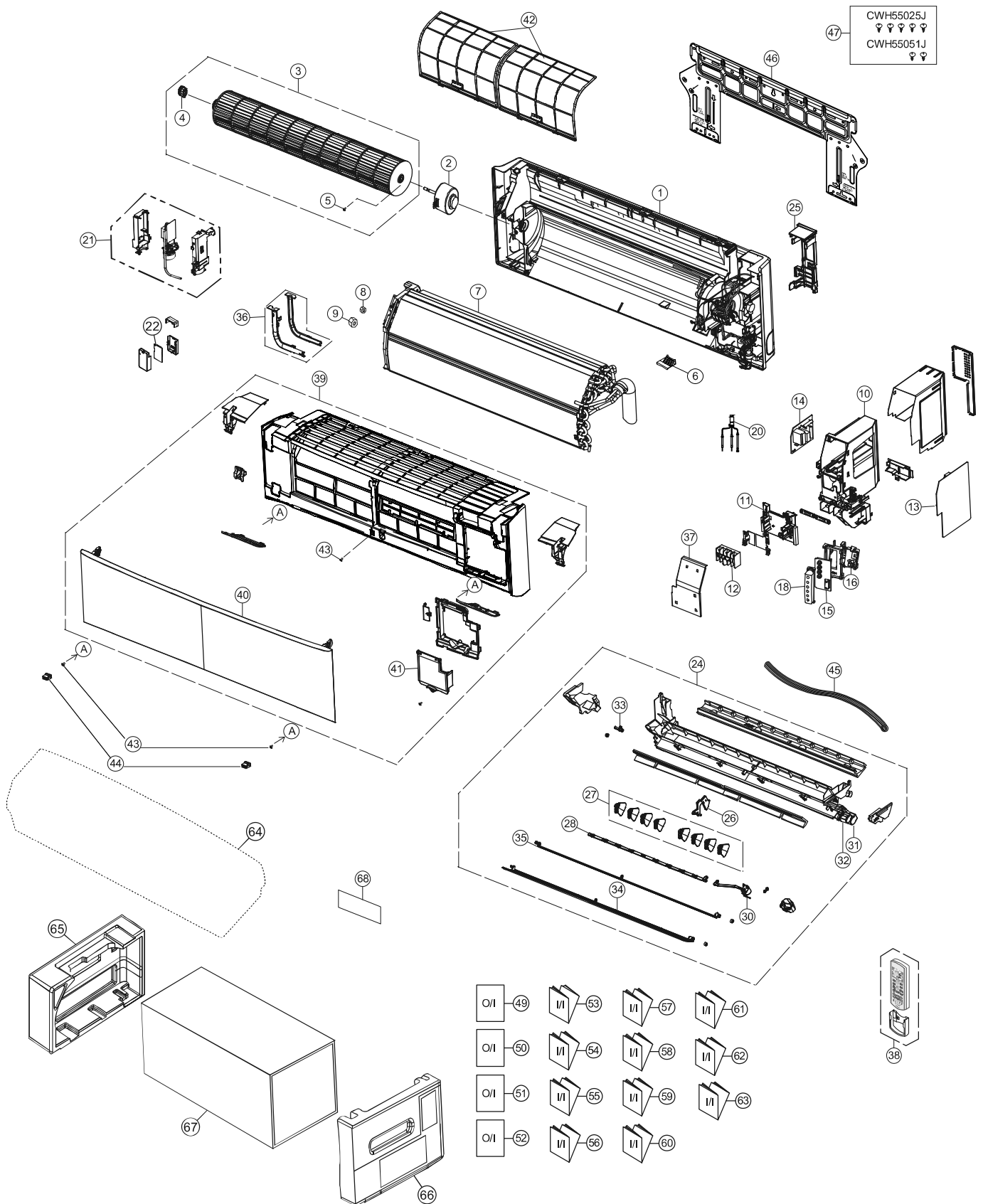


19. Exploded View and Replacement Parts List

19.1 Indoor Unit



Note

The above exploded view is for the purpose of parts disassembly and replacement.
 The non-numbered parts are not kept as standard service parts.

SAFETY	REF. NO.	PART NAME & DESCRIPTION	QTY.	CS-MZ16VKE	REMARK
	1	CHASSIS COMPLETE	1	ACXD50C00200	
⚠	2	FAN MOTOR	1	L6CBYYL0175	O
	3	CROSS-FLOW FAN COMPLETE	1	CWH02C1076	
	4	BEARING ASSY	1	CWH64K1006	
	5	SCREW - CROSS-FLOW FAN	1	CWH551146	
	6	PARTICULAR PIECE	1	CWD933067B	
	7	EVAPORATOR	1	ACXB30C12920	
	8	FLARE NUT (LIQUID)	1	CWT251048	
	9	FLARE NUT (GAS)	1	CWT251049	
	10	CONTROL BOARD CASING	1	ACXH10-00200	
	11	PARTICULAR PIECE -TERMINAL	1	CWD933137	
⚠	12	TERMINAL BOARD COMPLETE	1	CWA28C2357	O
⚠	13	ELECTRONIC CONTROLLER - MAIN	1	ACXA73C50970	O
⚠	14	ELECTRONIC CONTROLLER - SUB	1	ACXA73-31220	O
⚠	15	ELECTRONIC CONTROLLER - INDICATOR	1	ACXA73-08140	O
⚠	16	ELECTRONIC CONTROLLER - RECEIVER	1	ACXA73-07240	O
	18	INDICATOR HOLDER	1	ACXD93-00930	
⚠	20	SENSOR COMPLETE	1	CWA50C2664	O
⚠	21	GENERATOR COMPLETE	1	ACXH94C00960	
⚠	22	ELECTRONIC CONTROLLER - WIFI	1	ACXA73-28520	
	24	DISCHARGE GRILLE COMPLETE	1	ACXE20C05020	
	25	BACK COVER CHASSIS	1	CWD933233C	
	26	FULCRUM	1	ACXH62-00040	
	27	VERTICAL VANE	8	CWE241457	
	28	CONNECTING BAR	1	CWE261314	
⚠	30	AIR SWING MOTOR	1	ACXA98K00020	O
⚠	31	AIR SWING MOTOR (BIG)	1	ACXA98-01960	O
⚠	32	AIR SWING MOTOR (SMALL)	1	ACXA98-01990	O
	33	CAP - DRAIN TRAY	1	CWH521259	
	34	HORIZONTAL VANE COMPLETE (BIG)	1	ACXE24C01021	
	35	HORIZONTAL VANE COMPLETE (SMALL)	1	ACXE24C03830	
	36	DUCT - COMPLETE	1	ACXD22C00230	
	37	CONTROL BOARD COVER - COMPLETE	1	ACXH13C00150	
⚠	38	REMOTE CONTROL COMPLETE	1	ACXA75C16210	O
	39	FRONT GRILLE COMPLETE	1	ACXE10C09070	O
	40	INTAKE GRILLE COMPLETE	1	ACXE22K01110	
	41	GRILLE DOOR COMPLETE	1	CWE14C1090	
	42	AIR FILTER	2	CWD001279	O
	43	SCREW - FRONT GRILLE	3	XTT4+16CFJ	
	44	CAP - FRONT GRILLE	2	ACXH52-00020	
	45	DRAIN HOSE	1	ACXH85-00210	
	46	INSTALLATION PLATE	1	CWH361147	
	47	BAG COMPLETE - INSTALLATION SCREW	1	CWH82C1705	
	49	OPERATING INSTRUCTION	1	ACXF55-22540	
	50	OPERATING INSTRUCTION	1	ACXF55-22550	
	51	OPERATING INSTRUCTION	1	ACXF55-22700	
	52	OPERATING INSTRUCTION	1	ACXF55-22710	
	53	INSTALLATION INSTRUCTION	1	ACXF60-36490	
	54	INSTALLATION INSTRUCTION	1	ACXF60-36500	
	55	INSTALLATION INSTRUCTION	1	ACXF60-36510	

SAFETY	REF. NO.	PART NAME & DESCRIPTION	QTY.	CS-MZ16VKE	REMARK
	56	INSTALLATION INSTRUCTION	1	ACXF60-36520	
	57	INSTALLATION INSTRUCTION	1	ACXF60-36530	
	58	INSTALLATION INSTRUCTION	1	ACXF60-36540	
	59	INSTALLATION INSTRUCTION	1	ACXF60-36550	
	60	INSTALLATION INSTRUCTION	1	ACXF60-36560	
	61	INSTALLATION INSTRUCTION	1	ACXF60-36570	
	62	INSTALLATION INSTRUCTION	1	ACXF60-36580	
	63	INSTALLATION INSTRUCTION	1	ACXF60-36590	
	64	BAG	1	CWG861497	
	65	SHOCK ABSORBER (L)	1	ACXG70-00380	
	66	SHOCK ABSORBER (R)	1	ACXG70-00390	
	67	C. C. CASE	1	ACXG50-48971	
	68	MODEL LABEL	2	ACXF85-09650	

(NOTE)

- All parts are supplied from PAPAMY, Malaysia (Vendor Code: 00029488).
- "O" marked parts are recommended to be kept in stock.